

DEPARTMENT OF THE ARMY TECHNICAL MANUAL

DIRECT SUPPORT, GENERAL SUPPORT
AND DEPOT MAINTENANCE
REPAIR PARTS AND SPECIAL TOOLS LIST
FOR
TELESCOPE, MOUNT: M90
1240-344-4689

HEADQUARTERS, DEPARTMENT OF THE ARMY
JANUARY 1970

Technical Manual }
No. 9-1240-35035P }

HEADQUARTERS,
DEPARTMENT OF THE ARMY
WASHINGTON, D.C. 20315 7 Jan. 70

DIRECT SUPPORT, GENERAL SUPPORT AND DEPOT MAINTENANCE

REPAIR PARTS AND SPECIAL TOOLS LIST

TELESCOPE MOUNT: M90

(1240-344 4689)

| Section | | <i>Paragraph</i> | <i>Page</i> |
|---------|--|------------------|-------------|
| I. | INTRODUCTION | | |
| | Scope | 1 | 2 |
| | General | 2 | 2 |
| | Explanation of columns | 3 | 2 |
| | Special Information | 4 | 4 |
| | How to locate repair parts | 5 | 4 |
| | Abbreviations | 6 | 4 |
| | Federal supply codes for manufacturers | 7 | 4 |
| | Recommendations for maintenance publications | 8 | 4 |
| II. | REPAIR PARTS FOR DIRECT SUPPORT, GENERAL SUPPORT, AND DEPOT MAINTENANCE | — | 6 |
| III. | SPECIAL TOOLS, TEST AND SUPPORT EQUIPMENT FOR DIRECT SUPPORT, GENERAL SUPPORT, AND DEPOT MAINTENANCE | — | 10 |
| IV. | INDEX-FEDERAL STOCK NUMBER AND REFERENCE NUMBER CROSS-REFERENCE TO FIGURE AND ITEM NUMBER | — | 16 |

This manual supersedes SM ORD 8 SNL F-392, dated 26 March 1954 with changes 1, 2, and 3

Section I. INTRODUCTION

1. Scope.

This manual lists repair parts, special tools, and equipment required for the performance of direct support, general support, and depot maintenance of the telescope mount M90.

2. General.

This Repair Parts and 'Special Tools List is divided into the following sections:

a. Repair Parts-Section II. A list of repair parts for the performance of maintenance at the direct support, general support, and depot level in figure and item number sequence.

b. Special Tools, Test and Support Equipment-Section III. A list of special tools, test and support equipment for the performance of maintenance at the direct support, general support, and depot level.

c. Federal Stock Number and Reference Number Index-Section IV. A list of Federal Stock Numbers in ascending numerical sequence followed by a list of reference numbers in ascending alpha-numeric sequence, cross-referenced to the illustration figure number and item number.

3. Explanation of Columns.

The following provides an explanation of columns in the tabular lists in Sections II and III.

a. Source, Maintenance and Recoverability Codes (SMR), Column 1:

(1) Source code, indicates the selection status and source for the listed item. Source codes are:

| <i>Code</i> | <i>Explanation</i> |
|-------------|--|
| P | Repair parts, special tools, and test equipment which are stocked in or supplied from the GSA/DSA, or Army supply system and authorized for use at indicated maintenance categories. |
| P-2 | Repair parts, special tools and test equipment which are procured and stocked for insurance purposes because the combat or military essentially of the end item |

| <i>Code</i> | <i>Explanation</i> |
|-------------|---|
| | dictates that a minimum quantity be available in the supply system. |
| P9 | Assigned to items which are NSA design controlled; unique repair parts, special tools, test, measuring and diagnostic equipment, which are stocked and supplied by the Army COMSEC logistic system, and which are not subject to the provisions of AR 380-41. |
| P10 | Assigned to items which are NSA design controlled: special tools, test measuring and diagnostic equipment for COMSEC support, which are accountable under the provision of AR 380-41, which are stocked and supplied by the Army COMSEC logistic system. |
| M | Repair parts which are not procured or stocked, but are to be manufactured in indicated levels. |
| A | Assemblies which are not procured or stocked as such, but are made up of two or more units. Such component units carry individual stock numbers and descriptions, are procured and stocked separately and can be assembled to form the required assembly at indicated maintenance categories. |
| X | Parts and assemblies which are not procured or stocked and the mortality of which normally is below that of the applicable end item or component. The failure of such part or assembly should result in retirement of the end item from the supply system. |
| X1 | Repair parts which are not procured or stocked. The requirements for such items will be filled by use of the next higher assembly or component. |
| X2 | Repair parts which are not stocked. The indicated maintenance category requiring such repair parts will attempt to obtain same through cannibalization. |

Where such repair parts are not obtainable through cannibalization, requirements will be requisitioned with accompanying justification, through normal supply channels.

G Major assemblies that are procured with PEMA funds for initial issue only as exchange assemblies at DSU and GSU level. These assemblies will not be stocked above DS and GS level or returned to depot supply level.

(2) Maintenance code, indicated the lowest category of maintenance authorized to install the listed item. The maintenance level codes are:

| <i>Code</i> | <i>Explanation</i> |
|-------------|------------------------------|
| O | Organizational maintenance. |
| F | Direct support maintenance. |
| H | General support maintenance. |
| D | Depot maintenance. |

(3) Recoverability code, indicates whether unserviceable items should be returned for recovery or salvage. Items not coded are expendable.

Recoverability codes are:

| <i>Code</i> | <i>Explanation</i> |
|-------------|---|
| R | Applied to repair parts (assemblies and components) which are considered economically repairable at direct and general support maintenance levels. When the maintenance capability to repair these items does not exist, they are normally disposed of at the GS level. When supply considerations dictate, some of these spare parts may be listed for automatic return to supply for depot level repair as set forth in AR 700-50. When so listed they will be replaced by supply on an exchange basis. |

S Repair parts and assemblies which are economically repairable at DSU and GSU activities and which normally are furnished by supply on an exchange basis. When items are determined by a GSU to be uneconomically repairable, they will be evacuated to a depot for evaluation and analysis before final disposition.

b. *Federal Stock Number, Column 2.* This column indicates the Federal stock number assigned to the item and will be used for requisitioning purposes.

c. *Description, Column 3.* This column indicates the Federal item name and any additional Description of the item required. The abbreviation "w/e" when used as a part of the nomenclature,

indicates the Federal stock number includes all armament, equipment, accessories, and repair parts issued with the item. A part number or other five-digit Federal supply code for manufacturers in parentheses.

d. *Unit of Measure (u/m), Column 4.* A 2 character alphabetic abbreviation indicating the amount or quantity of the item upon which the allowances are based, e.d., ft, ea, pr, etc.

e. *Quantity Incorporated in Unit, Column 5.* This column indicates the quantity of the item used in the assembly group. A "V" appearing in this column in lieu of a quantity indicates that a definite quantity cannot be indicated (e.g., shims, spacers, gaskets, etc.)

f. *30-day DS-GS Maintenance Allowances, Columns 6 and 7.*

Note Allowances in GS column are for GS maintenance only.

(1) The allowance columns are divided into three sub-columns. Indicated in each sub-column, opposite the first appearance of each item, is the total quantity of items authorized for the number of equipment supported. Subsequent appearances of the same item will have the letters "REF" in the applicable allowance columns. Items authorized for use as required but not for initial stockage are identified with an asterisk in the allowance column.

(2) The quantitative allowances for DS/GS levels of maintenance will represent initial stockage for a 30-day period for the number of equipment supported.

(3) Determination of the total quantity of parts required for maintenance of more than 100 of these equipment can be accomplished by converting the equipment quantity to a decimal factor by placing a decimal point before the next to last digit of the number to indicate hundredths, and multiplying the decimal factor by the parts quantity authorized in the 51-100 allowance column. Example, authorized for 51-100 equipment is 40; for 150 equipment multiply 40 by 1.50 or 60 parts required.

g. *1-year Allowances per 100 Equipment/Contingency Planning Purposes, Column 8.* This column indicates opposite the first appearance of each item the total quantity required for distribution and contingency planning purposes. The range of items indicates that total quantities of all authorized items required to provide for adequate support of 100 equipment for one year.

h. *Depot Maintenance Allowance per 100 Equipment, Column 9.* This column indicates

opposite the first appearance of each item, the total quantity authorized for depot maintenance of 100 equipment. Subsequent appearances of the same item will have the letters "REF" in the allowance column. Items authorized for use as required but not for initial stockage are identified with an asterisk in the allowance column.

i. *Illustration, Column 10.* This column is divided as follows:

(1) *Figure Number, Column 10a.* Indicates the figure number of the illustration in which the item is shown.

(2) *Item Number, Column 10b.* Indicates the callout number used to reference the item in the illustration.

4. Special Information.

a. Telescope Mount, M90 is used with:
 Rifle, Recoilless, 106-mm, M40A1 (Mount M79)
 Rifle, Recoilless, 106-mm, M40A1 (Mount M92)
 Rifle, Self-Propelled, 106-mm, M50
 Rifle, Self-Propelled, 106-mm, M50A1.

b. Action change codes indicated in the left hand margin of the listing page denotes the following:

N. Indicates an added item not included in previous publications.

C. Indicates a change in data.

F. Indicates a change in FSN only

c. The following publications pertain to telescope mount M90 and its components:

| | |
|----------------|--|
| TM9-6141 | Field and Depot Maintenance Manual |
| SNL F-92 Ord 8 | Field and Depot Maintenance Allowances |

5. How to Locate Repair Parts.

a. When Federal stock number or reference number is unknown.

(1) *First.* Find the illustration covering the assembly group to which the repair part belongs.

(2) *Second.* Identify the repair part on the illustration and note the illustration figure and item number of the repair part.

(3) *Third.* Using the Repair Parts Listing, find the assembly group to which the repair part belongs and locate the illustration figure and item number noted on the illustration.

b. When Federal Stock number or reference number is known:

(1) *First.* Using the Index of Federal Stock Numbers and Reference Numbers find the pertinent Federal Stock Number or reference number.

This index is in ascending FSN sequence followed by a list of reference numbers in ascending alpha-numeric sequence, cross-referenced to the illustration figure number and item number.

(2) *Second.* Using the Repair Part Listing, find the assembly group of the repair part and the illustration figure number and item number referenced in the Index of Federal Stock Numbers and Reference Numbers.

6. Abbreviations.

| <i>Abbreviations</i> | <i>Explanation</i> |
|----------------------|---------------------------|
| acrflt | across flats |
| aly stl | alloy steel |
| cd pl | cadmium plate |
| cp | cone paint |
| cres | corrosion resistant steel |
| crpl | chromium plate |
| cskh | countersunk head |
| dia | diameter |
| dr | drilled |
| ext | external |
| fig | figure |
| filh | fillister head |
| fl | flat |
| fnsh | finish |
| hex | hexagon |
| hex soc | hexagonal socket |
| id | inside diameter |
| intl | internal |
| 1 | long |
| mscr | machine screw |
| no | number |
| od | outside diameter |
| psvt | passivate |
| rec | recessed |
| scr | screw |
| sltd | slotted |
| stl | steel |
| t | teeth |
| thd | thread |
| thk | thick |
| trq | torque |
| unc | unified course thread |
| unf | unified fine thread |
| w | wide |

7. Federal Supply Codes for Manufacturers.

| Code | Manufacturer |
|-------|---|
| 19200 | Frankford Arsenal, Philadelphia, Pa. |
| 96906 | Military Standard Promulgated by Standardization Division, Directorate of Logistics Services DSA. |
| 21450 | Ordnance Corps Engineering Standards, Rock Island Arsenal, Rock Island, Illinois. |

8. Recommendations for Maintenance Publication Improvements.

Report of errors, omissions, and recommendations for improving this publication by the individual user is

encouraged. Reports should be submitted on DA Form 2028 (Recommended Changes to DA Publications) and forwarded direct to the Commanding Officer, Frankford

Arsenal, ATTN: AMSWE-SMF-, Philadelphia, Pa. 19137.

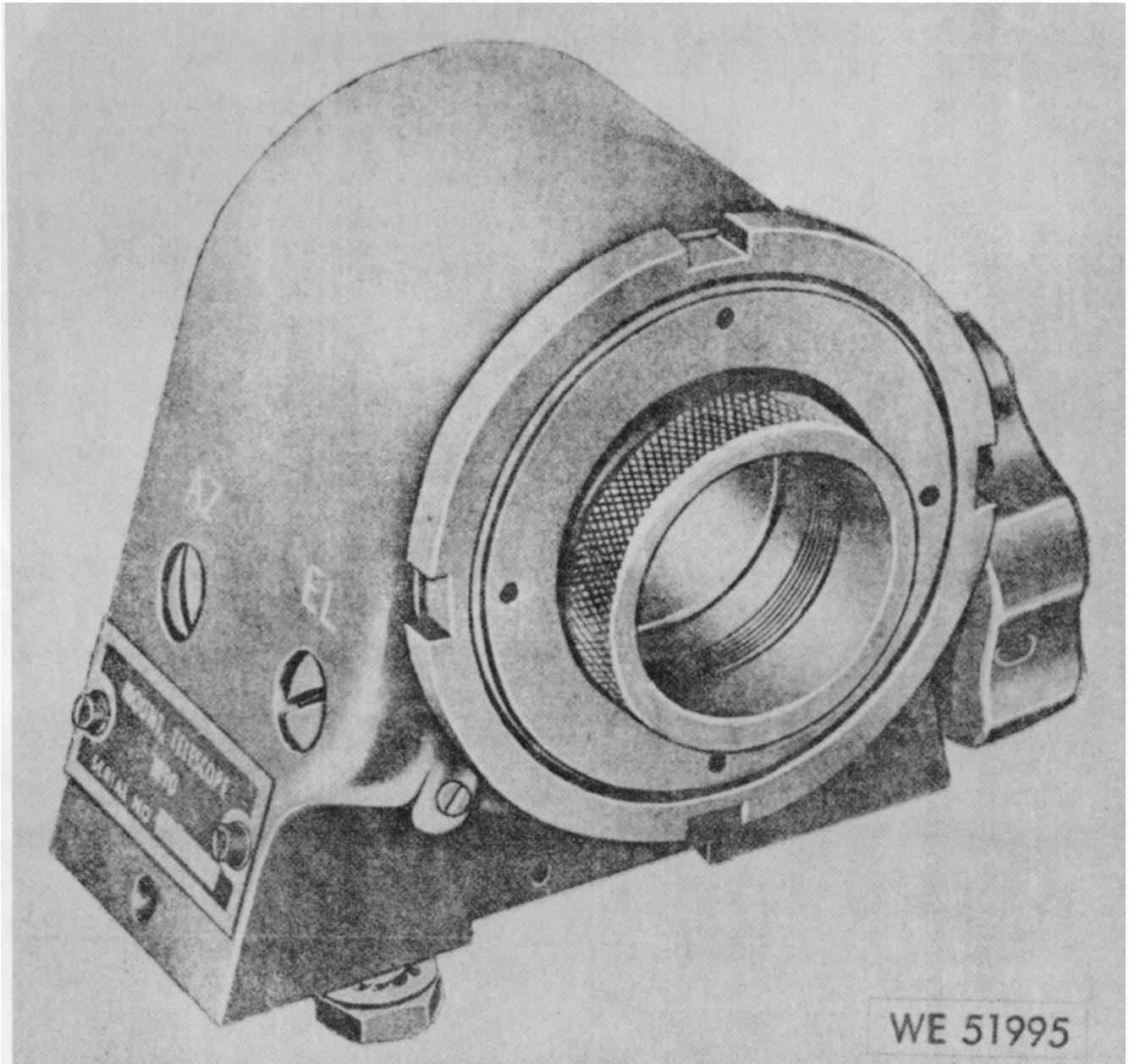


Figure 1. Mount telescope M90 (8299670)

SECTION II. REPAIR PARTS FOR DIRECT SUPPORT, GENERAL SUPPORT and DEPOT MAINTENANCE

| Act on Code | (1) Source Maint and Recov Code | | | (2) Federal Stock No. | (3) Description <i>Reference Number & Mfr Code</i> <i>Usable on Code</i> | (4) Unit of Meas | (5) Qty Inc in Unit | (6) 30-Day DS Maint Allowance | | | (7) 30-Day GS Maint Allowance | | | (8) 1-Yr Alw Per 100 Equip Cntgcy | (9) Depot Maint Alw Per 100 Equip | (10) Illustration | |
|-------------|------------------------------------|---------------|---|--------------------------|---|---------------------|------------------------|----------------------------------|--------------|---------------|----------------------------------|--------------|---------------|--------------------------------------|--------------------------------------|----------------------|-----------------|
| | (a) Source | (b) Maint | (c) Recov | | | | | (a) 1-20 | (b) 21-50 | (c) 51-100 | (a) 1-20 | (b) 21-50 | (c) 51-100 | | | (a) Fig. No. | (b) Item No. |
| | | | | | | | | | | | | | | | | | |
| C | P-F- | 5355-565-1092 | Knob 8299662 (19200) | EA | 1 | * | 2 | 2 | * | 2 | 2 | 24 | 4 | 2 | 2 | | |
| C | P-F- | 5330-531-2695 | Washer, Nonmetallic 8299675 (19200) | EA | 1 | * | 2 | 2 | * | 2 | 2 | 24 | 10 | 2 | 3 | | |
| C | P-F- | 5305-550-0156 | Screw, Special 8299750 (19200) | EA | 1 | * | 2 | 2 | * | 2 | 2 | 24 | 10 | 2 | 4 | | |
| C | P-F- | 4730-278-5332 | Plug, Machine Thread 5034655 (19200) | EA | 1 | * | 2 | 2 | * | 2 | 2 | 24 | 6 | 2 | 5 | | |
| C | P-F- | 5340-209-8501 | Spring, Helical, Compression 5031370 (19200) | EA | 1 | * | 2 | 2 | * | 2 | 2 | 24 | 10 | 2 | 6 | | |
| C | P-F- | 1290-546-9743 | Plunger, Worm 8299732 (19200) | EA | 1 | * | 2 | 2 | * | 2 | 2 | 24 | 6 | 2 | 7 | | |
| C | P-D- | | Setscrew 5039618 (19200) | EA | 1 | | | | | | | | 10 | 2 | 8 | | |
| N | P-D- | 5305-068-6708 | Setscrew Hex Soc, Cp, Cres, Psvt Fnsh, No. 2 64UNF-3A, 1/8 L MS51038-16 (96906) | EA | 1 | | | | | | | | 10 | 2 | 9 | | |
| N | P-F- | 1290-692-1515 | Cap, Ball 7680256 (19200) | EA | 1 | * | 2 | 2 | * | 2 | 2 | 24 | 6 | 2 | 10 | | |
| N | P-D- | 1290-546-9740 | Shaft 8299673 (19200) | EA | 1 | | | | | | | | 4 | 2 | 11 | | |
| N | P-F- | 1290-692-1516 | Socket, Ball 7680257 (19200) | EA | 1 | * | 2 | 2 | * | 2 | 2 | 24 | 8 | 2 | 12 | | |
| C | P-D- | 5305-550-0606 | Screw, Special 8299668 (19200) | EA | 2 | | | | | | | | 5 | 2 | 13 | | |
| C | P-D- | 1290-546-9742 | Worm 8299679 (19200) | EA | 2 | | | | | | | | 6 | 2 | 14 | | |
| C | P-D- | 5305-550-0606 | Screw, Special 8299668 (19200) (See Fig. 2, Item 13 for allowances) | EA | REF | | | | | | | | REF | 2 | 15 | | |

SECTION II. REPAIR PARTS FOR DIRECT SUPPORT, GENERAL SUPPORT and DEPOT MAINTENANCE - Cont.

| Act on Code | (1) Source Maint and Recov Code | | | (2) Federal Stock No. | (3) Description <i>Reference Number & Mfr Code Usable on Code</i> | (4) Unit of Meas | (5) Qty Inc in Unit | (6) 30-Day DS Maint Allowance | | | (7) 30-Day GS Maint Allowance | | | (8) 1-Yr Alw Per 100 Equip Cntgcy | (9) Depot Maint Alw Per 100 Equip | (10) Illustration | |
|-------------|------------------------------------|--------------|---------------|---|---|---------------------|------------------------|----------------------------------|--------------|---------------|----------------------------------|--------------|---------------|--------------------------------------|--------------------------------------|----------------------|-----------------|
| | (a) Source | (b) Maint | (c) Recov | | | | | (a) 1-20 | (b) 21-50 | (c) 51-100 | (a) 1-20 | (b) 21-50 | (c) 51-100 | | | (a) Fig. No. | (b) Item No. |
| | | | | | | | | | | | | | | | | | |
| C | P-F- | | 5305-550-0156 | Screw, Special 8299750 (19200) (See Fig 2, Item 4 for Allowances) | EA | REF | REF | REF | REF | REF | REF | REF | REF | REF | 2 | 17 | |
| N | P-F- | | 5340-816-4239 | Ring, Retaining Ext, Stl, Cd Pl, 0.094 Shaft Dia MS16633-1012 (96906) | EA | 1 | * | 2 | 2 | * | 2 | 2 | 24 | 6 | 2 | 18 | |
| N | M-F- | | | Gib 8299674 (19200) | | 1 | | | | | | | | | 2 | 19 | |
| C | P-F- | | 5310-531-0935 | Nut, Plain, Round 8299665 (19200) | EA | 1 | * | 2 | 2 | * | 2 | 2 | 24 | 6 | 2 | 20 | |
| C | P-F- | | 1290-535-7760 | Ring, Externally Threaded 8299666 (19200) | EA | 1 | * | 2 | 2 | * | 2 | 2 | 24 | 6 | 2 | 21 | |
| C | P-H- | | 5330-599-8743 | Packing Preformed 8299735 (19200) | EA | 2 | | | | | 2 | 2 | 24 | 12 | 2 | 22 | |
| C | P-D- | | 5310-564-7403 | Nut, Plain Knurled 8299664 (19200) | EA | 1 | | | | | | | | 6 | 2 | 23 | |
| N | X2-H- | | | Gear, Worm 8299672 (19200) | EA | 2 | | | | | | | | | 2 | 24 | |
| C | P-D- | | 1240-561-0681 | Ring, Gimbal 8299667 (19200) | EA | 2 | | | | | | | | 4 | 2 | 25 | |
| C | P-D- | | 1240-546-9739 | Shoe 8299669 (19200) | EA | 4 | | | | | | | | 10 | 2 | 26 | |
| N | P-D- | | 5305-701-5230 | Screw, Machine F1, Cskh, Cross Rec, Cres, Psvt Fnsh, No 2 65UNF-2A, 1/4 L MS51960-8 (96906) | EA | 1 | | | | | | | | 8 | 2 | 27 | |
| N | M-D- | | | Key, Machine 8299721 (19200) | | 1 | | | | | | | | | 2 | 28 | |
| N | X2-H- | | | Socket 8299671 (19200) | EA | 1 | | | | | | | | | 2 | 29 | |
| C | P-D- | | 1240-561-0681 | Ring, Gimbal 8299667 (19200) | EA | REF | | | | | | | | REF | 2 | 30 | |

SECTION II. REPAIR PARTS FOR DIRECT SUPPORT, GENERAL SUPPORT and DEPOT MAINTENANCE - Cont.

| Act on Code | (1) Source Maint and Recov Code | | | (2) Federal Stock No. | (3) Description <i>Reference Number & Mfr Code</i> <i>Usable on Code</i> | (4) Unit of Meas | (5) Qty Inc in Unit | (6) 30-Day DS Maint Allowance | | | (7) 30-Day GS Maint Allowance | | | (8) 1-Yr Alw Per 100 Equip Cntgcy | (9) Depot Maint Alw Per 100 Equip | (10) Illustration | |
|-------------|------------------------------------|--------------|---------------|--|---|---------------------|------------------------|----------------------------------|--------------|---------------|----------------------------------|--------------|---------------|--------------------------------------|--------------------------------------|----------------------|-----------------|
| | (a) Source | (b) Maint | (c) Recov | | | | | (a) 1-20 | (b) 21-50 | (c) 51-100 | (a) 1-20 | (b) 21-50 | (c) 51-100 | | | (a) Fig. No. | (b) Item No. |
| | | | | | | | | | | | | | | | | | |
| N | X2-H- | | | (See Fig. 2, Item 26 for Allowances) Gear, Worm 8299672 (19200) (Initially Listed as Fig. 2, Item 24) | EA | REF | | | | | | | | | | 2 | 32 |
| C | P-H- | | 5330-599-8743 | Packing Preformed 8299735 (19200) (See Fig. 2, Item 22 for Allowances) | EA | REF | | | | REF | REF | REF | | | REF | 2 | 33 |
| N | X2-F- | | 5305-057-0498 | Screw, Machine Pnh, Cross Rec, Cres, Psvt Fnsh, No. 2 64UNF-3/16 L MS51958-2 (96906) | EA | 2 | | | | | | | | | | 2 | 34 |
| N | X2-F- | | 5310-543-4652 | Washer, Lock F1, Intl T, Cres, Psvt Fnsh, 0.200 OD, 0.015 Thk, No 2 Scr Size MS35333-69 (96069) | EA | 2 | | | | | | | | | | 2 | 35 |
| C | M-H- | | | Plate Identification 8299711 (19200) | EA | 1 | | | | | | | | | | 2 | 36 |
| N | P-F- | | 5305-983-8084 | Screw, Cap, Socket Head Hex, Aly Stil, Crpl, 1/4 20UNC-3A, 3/4 L MS16997-60 (96906) | EA | 4 | * | 2 | 2 | * | 2 | 2 | 24 | 20 | 2 | 2 | 37 |
| N | P-F- | | 5310-543-2740 | Washer, Lock F1, Intl T, Cres, Psvt Fnsh, 0.478 OD, 0.028 Thk, 1/4 Scr Size MS35333-74 (96906) | EA | 4 | * | 2 | 2 | * | 2 | 2 | 24 | 10 | 2 | 2 | 38 |
| N | X1- | | | Mount 8299663 (19200) | | 1 | | | | | | | | | | 2 | 39 |

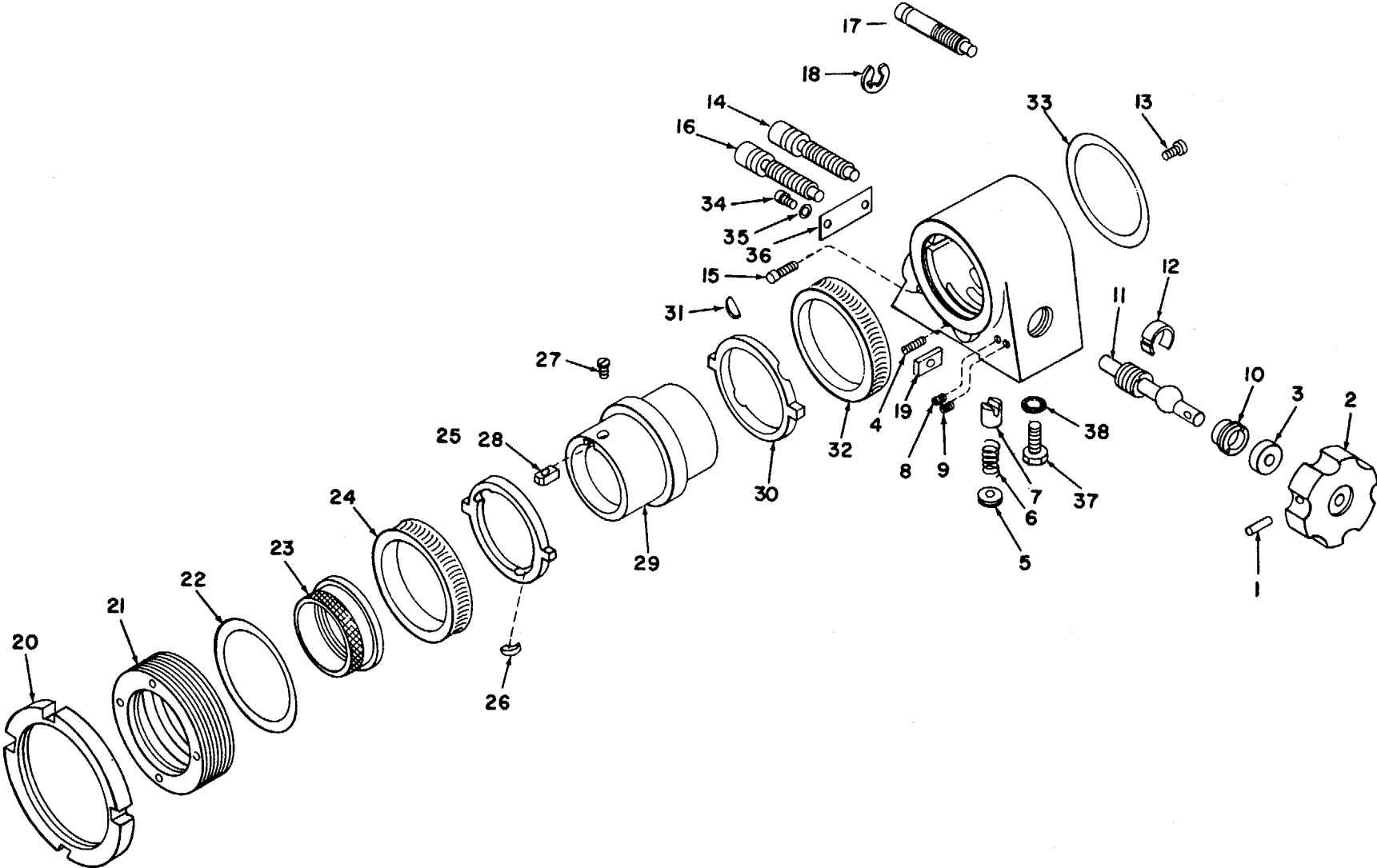
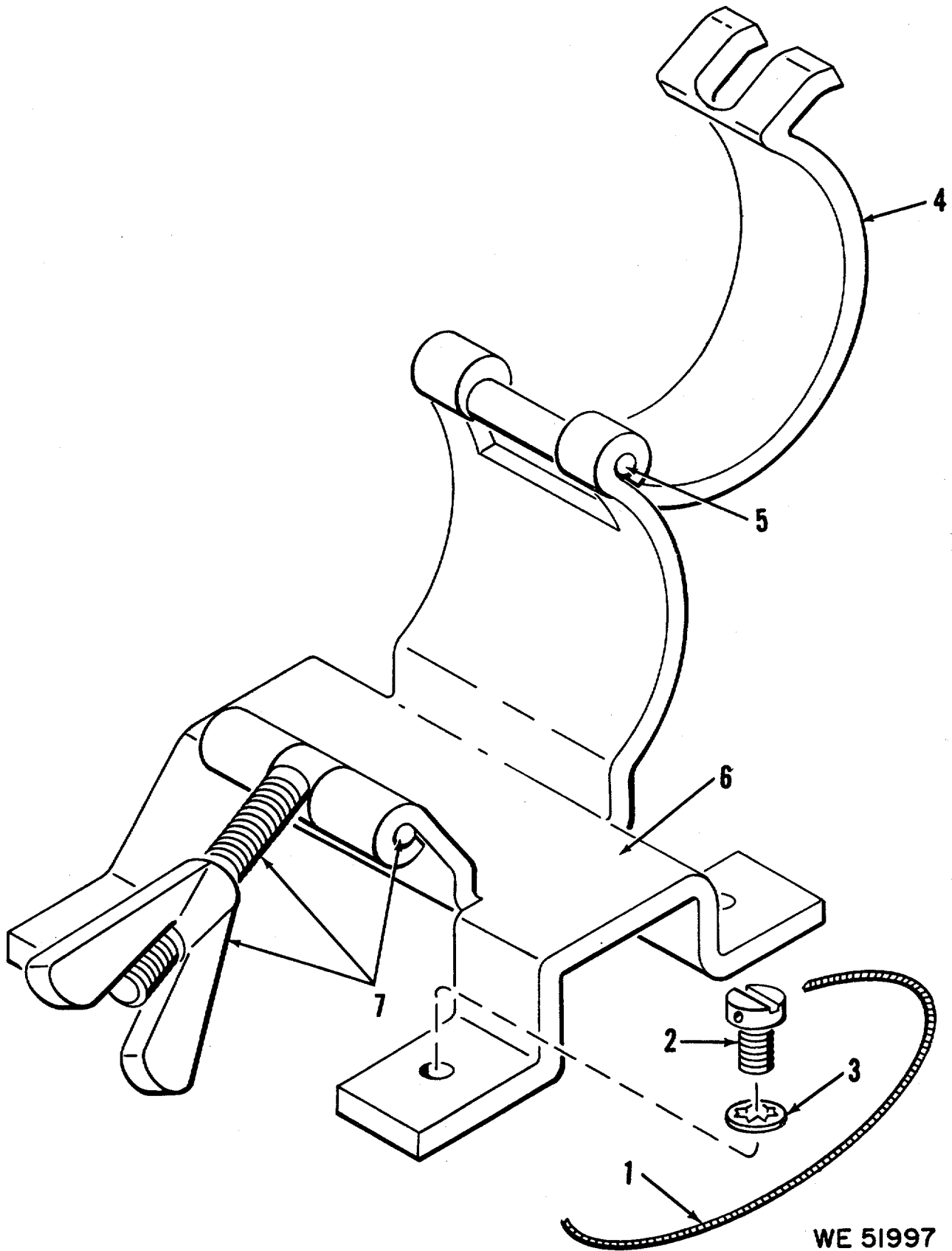


Figure 2. Mount telescope M90 (8299670)— exploded view.

**SECTION III. SPECIAL TOOLS, TEST AND SUPPORT EQUIPMENT FOR DIRECT SUPPORT,
GENERAL SUPPORT and DEPOT MAINTENANCE**

| Act on Code | (1) Source Maint and Recov Code | | | (2) Federal Stock No. | (3) Description <i>Reference Number & Mfr Code</i> <i>Usable on Code</i> | (4) Unit of Meas | (5) Qty Inc in Unit | (6) 30-Day DS Maint Allowance | | | (7) 30-Day GS Maint Allowance | | | (8) 1-Yr Alw Per 100 Equip Cntgcy | (9) Depot Maint Alw Per 100 Equip | (10) Illustration | |
|-------------------|--|-------|-------|--------------------------------|--|---------------------------|---------------------------------|-------------------------------------|-------|--------|-------------------------------------|-------|--------|--|---|----------------------|-------------|
| | (a) | (b) | (c) | | | | | (a) | (b) | (c) | (a) | (b) | (c) | | | (a) | (b) |
| | Source | Maint | Recov | | | | | 1-20 | 21-50 | 51-100 | 1-20 | 21-50 | 51-100 | | | Fig. No. | Item No. |
| C | P-F- | | | 1290-535-7761 | TOOLS AND EQUIPMENT EQUIPMENT Clamp, Riveted 8299677 (19200) | EA | 1 | * | * | 2 | * | * | 2 | 24 | 10 | 3 | — |
| C | P-F-R | | | 1290-300-8034 | Cover, Mount Telescope 8293769 (19200) REPAIR PARTS FOR EQUIPMENT CLAMP, RIVETED 8299677 | EA | 1 | * | * | 2 | * | * | 2 | 24 | 4 | 4 | — |
| N | P-F- | | | 9505-293-4208 | Wire, Lock MS20995-C32 (96906) | EA | V | * | * | * | * | * | * | 3 | 1 | 3 | 1 |
| N | P-F- | | | 5305-912-7643 | Screw, Machine Dr, Filh, Slted, Cres, Psvt Fnsh, No 8 36UNF-2A, 7/16 L MS35276-244 (96906) | EA | 4 | * | 2 | 2 | * | 2 | 2 | 24 | 10 | 3 | 2 |
| N | P-F- | | | 5310-019-0670 | Washer, Lock F1, Intl T, 0.176 ID, 0.340 OD, 0.023 Thk No 8 Scr Size MS35333-106 (96906) | EA | 4 | * | 2 | 2 | * | 2 | 2 | 24 | 10 | 3 | 3 |
| N | X1- | | | | Clamp 5321106 (19200) | | 1 | | | | | | | | | 3 | 4 |
| N | X1- | | | | Pin 8299727 (19200) | | 1 | | | | | | | | | 3 | 5 |
| N | X1- | | | | Bracket 8299678 (19200) | | 1 | | | | | | | | | 3 | 6 |
| N | X1- | | | | Nut 7646222 (19200) | | 1 | | | | | | | | | 3 | 7 |



WE 51997

Figure 3. Clamp, riveted (8299677)

**SECTION III. SPECIAL TOOLS, TEST AND SUPPORT EQUIPMENT FOR DIRECT SUPPORT,
GENERAL SUPPORT and DEPOT MAINTENANCE**

| Act on Code | (1) Source Maint and Recov Code | | | (2) Federal Stock No. | (3) Description <i>Reference Number & Mfr Code Usable on Code</i> | (4) Unit of Meas | (5) Qty Inc in Unit | (6) 30-Day DS Maint Allowance | | | (7) 30-Day GS Maint Allowance | | | (8) 1-Yr Alw Per 100 Equip Cntgcy | (9) Depot Maint Alw Per 100 Equip | (10) Illustration | |
|-------------|------------------------------------|--------------|--------------|--------------------------|--|---------------------|------------------------|----------------------------------|--|--|----------------------------------|--------------|---------------|--------------------------------------|--------------------------------------|----------------------|-----------------|
| | (a) Source | (b) Maint | (c) Recov | | | | | (a) 1-20 | (b) 21-50 | (c) 51-100 | (a) 1-20 | (b) 21-50 | (c) 51-100 | | | (a) Fig. No. | (b) Item No. |
| | N | P-F- | | | | | | | COVER, MOUNT TELESCOPE, 8293769 9505-293-4208 | Wire, Lock MS20995-C32 (96906) (See Fig. 3, Item 1 for Allowances) | EA | REF | REF | | | REF | REF |
| N | P-F- | | | 5305-912-4839 | Screw, Machine Dr, Filh, Slted, Cres, Psvt Fnsh, No 10 32UNF-2A, 7/16 L MS35276-262 (96906) | EA | 6 | * | 2 | 2 | * | 2 | 2 | 24 | 10 | 4 | 2 |
| N | P-F- | | | 5310-543-5933 | Washer, Lock F1, Intl T, Cres, Psvt Fnsh, 0.381 OD, 0.025 Thk, No 10 Bolt Size MS35333-73 (96906) | EA | 7 | * | 2 | 2 | * | 2 | 2 | 24 | 20 | 4 | 3 |
| C | P-F- | | | 5315-058-9776 | Pin, Spring 589776 (21450) | EA | 2 | * | 2 | 2 | * | 2 | 2 | 24 | 6 | 4 | 4 |
| N | X1- | | | | Cap 8299753 (19200) | | 1 | | | | | | | | | 4 | 5 |
| N | P-F- | | | 5310-050-3529 | Nut, Plain, Hexagon Mscr, Cres, Psvt Fnsh, No 10 32UNF-28, 0.0375 W Acrflt, 0.130 Thk MS35650-304 (96906) | EA | 1 | * | 2 | 2 | * | 2 | 2 | 24 | 10 | 4 | 8 |
| N | P-F- | | | 5310-543-5933 | Washer, Lock F1, Intl T, Cres, Psvt Fnsh, 0.381 OD, 0.025 Thk, No 10 Bolt Size MS35333-73 (96906) (See Fig. 4, Item 3 for Allowances) | EA | REF | REF | REF | REF | REF | REF | REF | REF | REF | 4 | 7 |
| C | P-F- | | | 5307-310-2556 | Stud, Snap Fastener 8299754 (19200) | EA | 1 | * | 2 | 2 | * | 2 | 2 | 24 | 8 | 4 | 8 |
| C | P-F- | | | 1290-300-8037 | Seal, Rubber Strip 8299757 (19200) | EA | 2 | * | 2 | 2 | * | 2 | 2 | 24 | 10 | 4 | 9 |
| C | P-F- | | | 1240-310-2557 | Rubber Strip, Cellular 8299762 (19200) | EA | 2 | * | 2 | 2 | * | 2 | 2 | 24 | 6 | 4 | 10 |

**SECTION III. SPECIAL TOOLS, TEST AND SUPPORT EQUIPMENT FOR DIRECT SUPPORT,
GENERAL SUPPORT and DEPOT MAINTENANCE**

| Act on Code | (1) Source Maint and Recov Code | | | (2) Federal Stock No. | (3) Description <i>Reference Number & Mfr Code</i> <i>Usable on Code</i> | (4) Unit of Meas | (5) Qty Inc in Unit | (6) 30-Day DS Maint Allowance | | | (7) 30-Day GS Maint Allowance | | | (8) 1-Yr Alw Per 100 Equip Cntgcy | (9) Depot Maint Alw Per 100 Equip | (10) Illustration | |
|-------------|------------------------------------|--------------|--------------|--------------------------|---|---------------------|------------------------|----------------------------------|---------------|---------------------------------------|----------------------------------|--------------|---------------|--------------------------------------|--------------------------------------|----------------------|-----------------|
| | (a) Source | (b) Maint | (c) Recov | | | | | (a) 1-20 | (b) 21-50 | (c) 51-100 | (a) 1-20 | (b) 21-50 | (c) 51-100 | | | (a) Fig. No. | (b) Item No. |
| | C | P-F- | | | | | | | 1290-300-8086 | Seal, Rubber Strip 8299756 (19200) | EA | 2 | * | | | 2 | 2 |
| N | P-F- | | | 5310-934-9759 | Nut, Plain, Hexagon Cres, Psvt Fnsh, No 8 32UNC-2B MS35649-284 (96906) | EA | 1 | * | 2 | 2 | * | 2 | 2 | 24 | 10 | 4 | 12 |
| N | P-F- | | | 5310-543-2739 | Washer, Lock F1, Intl T, Cres, Psvt Fnsh, 0.178 ID, 0.840 OD, 0.023 Thk, No 8 Scr Size MS85883-72 (96906) | EA | 1 | * | 2 | 2 | * | 2 | 2 | 24 | 10 | 4 | 18 |
| N | P-F- | | | 5805-701-5058 | Screw, Machine Pnh, Cross Rec, Cres, Psvt Fnsh, No 8 86UNF-2A, 5/16 L MS51958-42 (96906) | EA | 1 | * | 2 | 2 | * | 2 | 2 | 24 | 10 | 4 | 14 |
| C | P-F- | | | 5340-598-9826 | Clip, Spring Tension 8299755 (19200) | EA | 1 | * | 2 | 2 | * | 2 | 2 | 24 | 6 | 4 | 15 |
| N | P-F- | | | 5820-233-9501 | Rivet, Tubular MS2045066B6 (96906) | EA | 2 | * | 2 | 2 | * | 2 | 2 | 24 | 10 | 4 | 16 |
| C | P-F- | | | 1290-300-8088 | Flap, Pinned 8299760 (19200) | EA | 1 | * | 2 | 2 | * | 2 | 2 | 24 | 4 | 4 | 17 |
| N | X1- | | | | Wire (Spec QQ-W-821) | | 1 | | | | | | | | | 4 | 18 |
| N | X1- | | | | Leaf, Butt Hinge 8299758 (19200) | | 1 | | | | | | | | | 4 | 19 |
| N | X1- | | | | Flap 8299759 (19200) | | 1 | | | | | | | | | 4 | 20 |
| N | P-F- | | | 5310-906-1691 | Nut, Plain, Hexagon Cres, Psvt Fnsh, 1/4 Dia Thd, 0.665 Thk, 1.299 W Acrlt MS51972-1 (16906) | EA | 2 | * | 2 | 2 | * | 2 | 2 | 24 | 8 | 4 | 21 |
| N | P-F- | | | 5810-543-2740 | Washer, Lock F1, Intl T, Cres, Psvt Fnsh, 0.478 OD, 0.028 Thk, 1/4 Scr. Size MS3533-74 (96906)m | EA | 2 | REF | REF | REF | REF | REF | REF | | REF | 4 | 22 |

**SECTION III. SPECIAL TOOLS, TEST AND SUPPORT EQUIPMENT FOR DIRECT SUPPORT,
GENERAL SUPPORT and DEPOT MAINTENANCE**

| Act on Code | (1) Source Maint and Recov Code | | | (2) Federal Stock No. | (3) Description <i>Reference Number & Mfr Code</i> <i>Usable on Code</i> | (4) Unit of Meas | (5) Qty Inc in Unit | (6) 30-Day DS Maint Allowance | | | (7) 30-Day GS Maint Allowance | | | (8) 1-Yr Alw Per 100 Equip Cntgcy | (9) Depot Maint Alw Per 100 Equip | (10) Illustration | |
|-------------|------------------------------------|--------------|--------------|--------------------------|---|---------------------|------------------------|----------------------------------|---------------|--|----------------------------------|--------------|---------------|--------------------------------------|--------------------------------------|----------------------|-----------------|
| | (a) Source | (b) Maint | (c) Recov | | | | | (a) 1-20 | (b) 21-50 | (c) 51-100 | (a) 1-20 | (b) 21-50 | (c) 51-100 | | | (a) Fig. No. | (b) Item No. |
| | C | P-F- | | | | | | | 5306-207-4954 | See Fig. 2, Item 38 for Allowances) Screw Shoulder 8299751 (19200) | EA | 2 | * | | | 2 | 2 |
| C | P-F- | | | 5305-207-4954 | Screw, Shoulder 8299751 (19200) (See Fig. 4, Item 23 for Allowances) | EA | REF | REF | REF | REF | REF | REF | REF | | REF | 4 | 24 |
| C | P-F- | | | 5340-664-6751 | Spring, Helical, Torsion 8299740 (19200) | EA | 1 | * | 2 | 2 | * | 2 | 2 | 24 | 6 | 4 | 25 |
| C | P-F- | | | 1290-300-8035 | Latch 8299685 (19200) | EA | 1 | * | 2 | 2 | * | 2 | 2 | 24 | 6 | 4 | 26 |
| C | P-F- | | | 1240-310-2557 | Rubber Strip, Cellular 8299762 (19200) See Fig. 4, Item 10 for Allowances) | EA | REF | REF | REF | REF | REF | REF | REF | | REF | 4 | 27 |
| N | P-F- | | | | Grommet, Rubber 7595129 (19200) | EA | 1 | * | 2 | 2 | * | 2 | 2 | 24 | 10 | 4 | 28 |
| N | X1 | | | | Base 8299752 (19200) | | 1 | | | | | | | | | 4 | 29 |

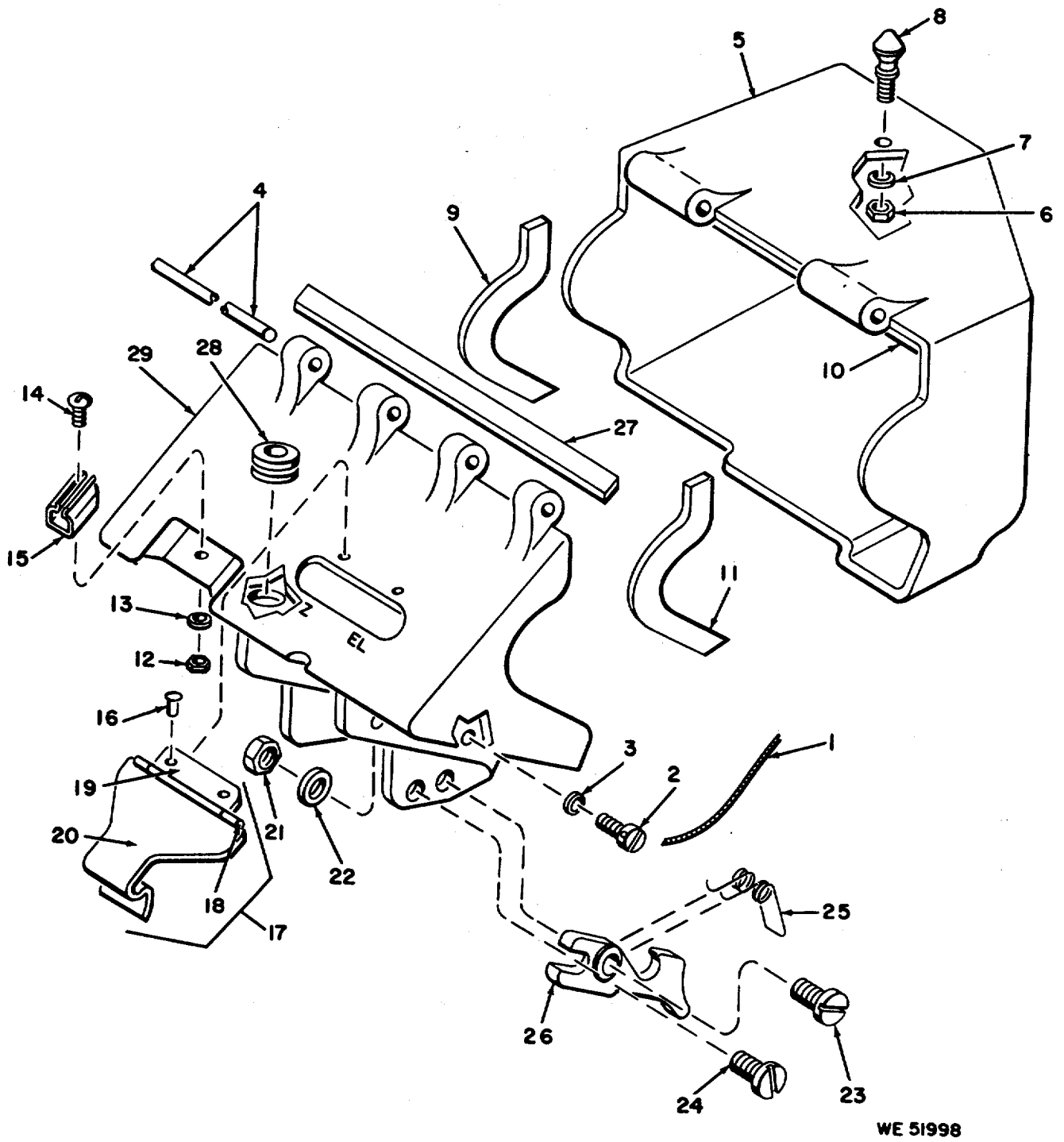


Figure 4. Cover, mount telescope (8293769)

SECTION IV
INDEX - FEDERAL STOCK NUMBER CROSS- REFERENCE TO FIGURE AND ITEM NUMBER

| STOCK NUMBER | FIG. | ITEM | STOCK NUMBER | FIG. | ITEM |
|---------------|------|------|---------------|------|------|
| 1240-310-2557 | 4 | 27 | 5305-912-4839 | 4 | 2 |
| 1240-310-2557 | 4 | 10 | 5305-912-7643 | 3 | 2 |
| 1240-546-9739 | 2 | 26 | 5305-983-8084 | 2 | 87 |
| 1240-546-9739 | 2 | 31 | 5307-310-2556 | 4 | 8 |
| 1240-561-0681 | 2 | 30 | 5310-019-0670 | 3 | 8 |
| 1240-561-0681 | 2 | 25 | 5310-050-3529 | 4 | 6 |
| 1290-300-8035 | 4 | 2 | 5310-531-0935 | 2 | 20 |
| 1290-300-8036 | 4 | 11 | 6531-543-2739 | 4 | 18 |
| 1290-300-8037 | 4 | 9 | 5310-543-2740 | 2 | 88 |
| 1290-300-8038 | 4 | 17 | 5310-543-2740 | 4 | 22 |
| 1290-535-7760 | 2 | 21 | 6310-543-4652 | 2 | 85 |
| 1290-546-9740 | 2 | 11 | 5310-543-5933 | 4 | 7 |
| 1290-546-9742 | 2 | 14 | 5310-643-5933 | 4 | 8 |
| 1290-546-9742 | 2 | 16 | 5310-564-7403 | 2 | 23 |
| 1290-546-9743 | 2 | 7 | 5310-905-1691 | 4 | 21 |
| 1290-692-1515 | 2 | 10 | 5310-934-9759 | 4 | 12 |
| 1290-692-1516 | 2 | 12 | 5315-058-9737 | 2 | 1 |
| 4730-278-5332 | 2 | 5 | 5315-058-9776 | 4 | 4 |
| 5305-057-0498 | 2 | 34 | 5320-233-9501 | 4 | 16 |
| 5305-057-0498 | 2 | 34 | 5330-531-2695 | 2 | 8 |
| 5305-068-6708 | 2 | 9 | 5330-599-8743 | 2 | 22 |
| 5305-207-4954 | 4 | 24 | 5330-599-8743 | 2 | 88 |
| 5305-207-4954 | 4 | 23 | 5340-209-8501 | 2 | 6 |
| 5305-550-0156 | 2 | 4 | 5340-598-9826 | 4 | 15 |
| 5305-550-0156 | 2 | 17 | 5340-664-6751 | 4 | 25 |
| 5305-550-0606 | 2 | 15 | 5340-816-4239 | 2 | 18 |
| 5305-550-0606 | 2 | 13 | 5355-565-1092 | 2 | 2 |
| 5305-701-5058 | 4 | 14 | 9505-293-4208 | 4 | 1 |
| 5305-701-5230 | 2 | 27 | 9505-293-4208 | 3 | 1 |

SECTION IV
INDEX — REFERENCE NUMBER CROSS-REFERENCED TO FIGURE AND ITEM NUMBER

| REFERENCE NO. | MFR CODE | FIG. NO. | ITEM NO. | REFERENCE NO. | MFR CODE | FIG. NO. | ITEM NO. |
|---------------|----------|----------|----------|---------------|----------|----------|----------|
| MS16562-217 | 96906 | 2 | 1 | MS51958-2 | 96906 | 2 | 34 |
| MS16633-1012 | 96906 | 2 | 18 | MS51958-42 | 96906 | 4 | 14 |
| MS16997-60 | 96906 | 2 | 37 | MS51960-8 | 96906 | 2 | 27 |
| MS2045066B6 | 96906 | 4 | 16 | MS51972-1 | 96906 | 4 | 21 |
| MS20995-C32 | 96906 | 8 | 1 | 689776 | 21450 | 4 | 4 |
| MS35276-244 | 96906 | 8 | 2 | 5031370 | 19200 | 2 | 6 |
| MS35276-262 | 96906 | 4 | 2 | 5034655 | 19200 | 2 | 5 |
| MS35333-106 | 96906 | 3 | 3 | 5039618 | 19200 | 2 | 8 |
| MS35333-69 | 96069 | 2 | 35 | 5321106 | 19200 | 8 | 4 |
| MS35333-72 | 96906 | 4 | 13 | 7595129 | 19200 | 4 | 28 |
| MS35333-73 | 96906 | 4 | 3 | 7646222 | 19200 | 8 | 7 |
| MS35333-74 | 96906 | 2 | 38 | 7680256 | 19200 | 2 | 10 |
| MS35649-284 | 96906 | 4 | 12 | 7680257 | 19200 | 2 | 12 |
| MS35650-304 | 96906 | 4 | 6 | 8299662 | 19200 | 2 | 2 |
| MS51038-16 | 96906 | 2 | 9 | 8299663 | 19200 | 2 | 39 |

SECTION IV
INDEX — REFERENCE NUMBER CROSS-REFERENCED TO FIGURE AND ITEM NUMBER

| REFERENCE NO. | MFR CODE | FIG. NO. | ITEM NO. | REFERENCE NO. | MFR CODE | FIG. NO. | ITEM. NO |
|---------------|----------|----------|----------|---------------|----------|----------|----------|
| 8299664 | 19200 | 2 | 23 | 8299727 | 19200 | 8 | 5 |
| 8299665 | 19200 | 2 | 20 | 8299732 | 19200 | 2 | 7 |
| 8299666 | 19200 | 2 | 21 | 8299735 | 19200 | 2 | 22 |
| 8299667 | 19200 | 2 | 25 | 8299740 | 19200 | 4 | 25 |
| 8299668 | 19200 | 2 | 13 | 8299750 | 19200 | 2 | 17 |
| 8299669 | 19200 | 2 | 26 | 8299750 | 19200 | 2 | 4 |
| 8299671 | 19200 | 2 | 29 | 8299751 | 19200 | 4 | 28 |
| 8299672 | 19200 | 2 | 24 | 8299762 | 19200 | 4 | 29 |
| 8299673 | 19200 | 2 | 11 | 8299753 | 19200 | 4 | 5 |
| 8299674 | 19200 | 2 | 19 | 8299754 | 19200 | 4 | 8 |
| 8299675 | 19200 | 2 | 3 | 8299755 | 19200 | 4 | 15 |
| 8299678 | 19200 | 3 | 6 | 8299756 | 19200 | 4 | 11 |
| 8299679 | 19200 | 2 | 14 | 8299757 | 19200 | 4 | 9 |
| 8299679 | 19200 | 2 | 16 | 8299758 | 19200 | 4 | 19 |
| 8299685 | 19200 | 4 | 26 | 8299759 | 19200 | 4 | 20 |
| 8299711 | 19200 | 2 | 36 | 8299760 | 19200 | 4 | 17 |
| 8299721 | 19200 | 2 | 28 | 8299762 | 19200 | 4 | 10 |

GPO 825-15-3

By Order of the Secretary of the Army:

Official:

KENNETH G. WICKHAM
Major General , United States Army,
The Adjutant General

W. C. WESTMORELAND
General, United States Army
Chief of Staff

DISTRIBUTION:

To be distributed in accordance with DA Form 12-41, (qty rqr block no. 74) direct and general support maintenance requirements for Telescope, Mount.

* U.S. GOVERNMENT PRINTING OFFICE : 1993 0 - 342-421 (62428)

RECOMMENDED CHANGES TO EQUIPMENT TECHNICAL PUBLICATIONS



SOMETHING WRONG WITH THIS PUBLICATION?

THEN... JOT DOWN THE DOPE ABOUT IT ON THIS FORM, CAREFULLY TEAR IT OUT, FOLD IT AND DROP IT IN THE MAIL!

FROM: (PRINT YOUR UNIT'S COMPLETE ADDRESS)

DATE SENT

PUBLICATION NUMBER

PUBLICATION DATE

PUBLICATION TITLE

BE EXACT... PIN-POINT WHERE IT IS

| PAGE NO. | PARA-GRAPH | FIGURE NO. | TABLE NO. |
|----------|------------|------------|-----------|
|----------|------------|------------|-----------|

IN THIS SPACE TELL WHAT IS WRONG AND WHAT SHOULD BE DONE ABOUT IT:

TEAR ALONG PERFORATED LINE

PRINTED NAME, GRADE OR TITLE, AND TELEPHONE NUMBER

SIGN HERE:

DA FORM 2028-2
1 JUL 79

PREVIOUS EDITIONS ARE OBSOLETE.

P.S.—IF YOUR OUTFIT WANTS TO KNOW ABOUT YOUR RECOMMENDATION MAKE A CARBON COPY OF THIS AND GIVE IT TO YOUR HEADQUARTERS.

